



## TAILOR-MADE MADE-TO-MEASURE PACKAGING

NOMAPACK® covers a comprehensive standard range of packaging profiles. But frequently, only a custom-made product will do the job sufficiently well. We'll be delighted to develop tailor-made packaging in partnership with your specialists - no matter how unconventional in shape or nature. Customers-specific products require leading-edge technology: thanks to process-controlled systems, we can respond flexibly and at short notice to global market trends and needs. Numerous production techniques such as extrusion, form moulding, hot-melt, profiling and cutting processes etc. facilitate foam production that is entirely solution focused.



Diversity in shape



Various side lengths



Piece, fixed length, rolled



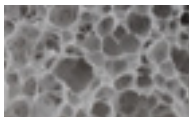
Additives



Adhesives



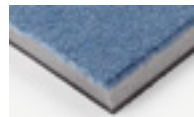
Special serrations



Density



Co-extrusion



Lamination

## NOMAPACK® PROFILES

### The best edge protection!

- Closed cell PE-LD foam
- Very flexible with high grip strength
- Easy & quick handling
- Water absorption < 1-vol.% after 40 days
- Does not scratch or damage the surfaces
- Very good padding abilities with shock absorbing effect
- Temperature resistant from -40°C to +100°C (-40F to +212F)
- 100% recyclable PE-LD foam
- CFC & HCFC free
- Chemically neutral

# NOMAPACK®

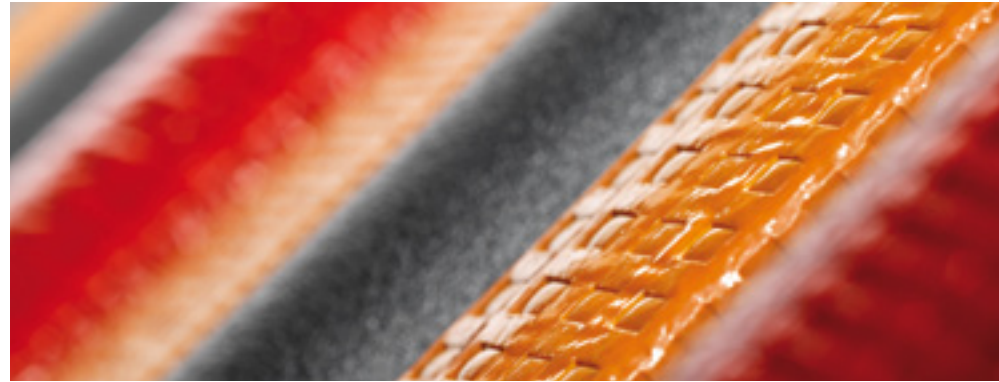


KWINP03 - 09/2010 © NMC sp, 2010 - Resp. P.L.L. NMC sp - Gerh.Neub-Strosse - B-4731 Eynatten

*You crack it. We pack it.*

[www.nmc.eu](http://www.nmc.eu)





### NOMAPACK® PAD NOMAPACK® L

50x10	100x25	50x50 - 6	30 kg/m <sup>3</sup>
50x20	100x50	75x75 - 10	30 kg/m <sup>3</sup>
50x50		Available with or without removable adhesive	
65x25	24 kg/m <sup>3</sup>		

Available with removable or permanent adhesive

### NOMAPACK® SYSTEM

<b>System</b>		<b>System Corner</b>	
20	34kg/m <sup>3</sup>	30/85	34kg/m <sup>3</sup>
30	24 or 34kg/m <sup>3</sup>	40/85	34kg/m <sup>3</sup>
40	24 or 34kg/m <sup>3</sup>	50/85	34kg/m <sup>3</sup>
50	24 or 34kg/m <sup>3</sup>		
60	34kg/m <sup>3</sup>		

### NOMAPACK® WS

<b>33x26</b>	<b>45x26</b>	<b>40x30</b>
45 kg/m <sup>3</sup> or 63 kg/m <sup>3</sup>	55 kg/m <sup>3</sup>	55 kg/m <sup>3</sup>
Reinforced profile	Reinforced profile	Reinforced Profile
Delivered on coil	Delivered on coil	Delivered on coil

### NOMAPACK® U

<b>U Tulip</b>	<b>U Tulip Corner</b>	<b>New: U Stretch</b>
5-15* 35-45* 80-100	5-15 35-45 80-100	100-120-160 30kg/m <sup>3</sup>
15-25* 45-60 100-120	15-25 45-60 30kg/m <sup>3</sup>	
25-35* 60-80 30kg/m <sup>3</sup>	25-35 60-80	

\* Available in multishape version 5-15 & 15-25 on coil

<b>U 6-12</b>	<b>U 12-18</b>	<b>U 8-12</b>
6-12 35kg/m <sup>3</sup>	12-18 35kg/m <sup>3</sup>	08-12 45kg/m <sup>3</sup>

Available with reinforcement or pre-cut  
Supplied as coil

<b>U Higher density</b>	<b>U Tulip long legs</b>	<b>U Tulip extra padding</b>
20-30 60kg/m <sup>3</sup>	0-30 33kg/m <sup>3</sup>	15-25/80 30kg/m <sup>3</sup>
35-50 65kg/m <sup>3</sup>	30-40 30kg/m <sup>3</sup>	30-38 30kg/m <sup>3</sup>
	30-45* 30kg/m <sup>3</sup>	30-45/55 30kg/m <sup>3</sup>
	45-70 25kg/m <sup>3</sup>	

\*Colour: yellow

### NOMAPACK® O

<b>O-Slit</b>	<b>O-Preslit</b>	<b>O-Round</b>
15-9 28-9	15-13 28-13	75 30kg/m <sup>3</sup>
18-9 35-9	18-13 35-13	100 30kg/m <sup>3</sup>
22-9 42-9	22-13 42-13	150 35kg/m <sup>3</sup>
25kg/m <sup>3</sup>	25kg/m <sup>3</sup>	

### NOMAPACK® CUT CORNER

75-10 75-20 100-15
75-15 100-10 100-20
30kg/m <sup>3</sup>

### NOMAPACK® GLAS PAD

20x20x10 45x25x14
20x20x12 45x45x10
20x20x14 45x45x12
45x25x10 45x45x14
45x25x12 130kg/m <sup>3</sup>

### NOMAPACK® C

<b>BTH</b>	<b>Rectangular</b>	<b>25*10-10</b>
30kg/m <sup>3</sup>	50x50 30 kg/m <sup>3</sup>	30kg/m <sup>3</sup>
	100x50 30 kg/m <sup>3</sup>	